

# We Brighten Your Brands.





# Brightening Your Brands from the Beginning.

Founded in 1957 to design and develop high-reliability lighting products, SloanLED® quickly became a pioneer in LED technology. Our founder, Charles Sloan, was driven by two simple principles: employ the latest technologies to develop quality lighting products and take excellent care of our customers.

SloanLED has continued to deliver on these principles as a leading supplier of aircraft indicator lights for the last 60 years, and our commitment to producing safe, reliable, lighting solutions that withstand the elements and harshest weather conditions, keeps us at the forefront of the lighting market. Our high-efficiency, long lasting solutions don't just brighten your brands; they represent significant energy cost reductions, maintenance cost savings, easy installation, faster ROI, and deliver exceptional performance with consistent brightness and uniformity.



**1957**

Company founded by Charles Sloan

**1968**

Company begins early work with U.S. military

**1979**

Pioneers in LED technology

**1997**

First national signage program

**1999**

SloanLED enters spa market

**2003**

SloanLED introduces Constant Current Technology

**2004**

Patent issued to SloanLED for LEDStripe®

**2011**

SloanLED enters petroleum & c-store markets

**2012**

50,000,000 feet of SloanLED product sold

**2013**

Design patent for Pole Mount Light issued





At SloanLED, it is our

# MISSION

to deliver innovative light solutions by anticipating our customer's needs.

By understanding the lighting application, we design, test, and deliver comprehensive solutions that anticipate the customer's total cost of ownership needs and provide a positive experience. We collaborate with our partners to leverage technology, focus on research, and continuously improve our organization, processes, and products.

We are pioneers in applied light technology solutions; with a

# VISION

of enlightening the world.



The Printworks  
Manchester City Centre



**2000**  
ChannelLED  
introduced

**2022**  
The leader in  
light technology

**2057**  
Celebrate 100-year  
anniversary

**"A brand is a living entity, and it is enriched or undermined cumulatively over time—the product of a thousand small gestures."**

~ Michael Eisner

# Companies we partner with:

They say you're known by the company you keep; that's why successful brands, who mean business, trust SloanLED.



## Consumer Services:

Allianz  
Anytime Fitness  
AT&T  
Enterprise  
Extra Space  
Hertz  
Hudson News  
Jiffy Lube  
Lens Crafters  
Life Storage  
Nokia  
Pearle Vision  
Samsung  
Sanquin  
Shurgard Self-Storage  
State Farm  
Telekom  
T-Mobile  
U-Haul  
Verizon  
Vodafone  
VW Dealerships

## Financial Services:

Amen Bank  
Alliance Bank  
Bancorp  
Barclays  
BMO Harris  
Capital One  
Citibank  
Chase ATMs  
Commerz Bank  
Danske Bank  
Deutsche Bank  
Fidelity  
First Cash  
Invesco  
Lloyds Bank  
M&T Bank  
Nat West  
Prudential  
Sparkasse  
Sun Trust Bank  
TD Bank  
Wells Fargo

## Food & Grocery:

Albert Heijn  
Applebees  
Arby's  
Auchan  
Big Y  
BJ Restaurants  
Bob Evans  
Buffalo Wild Wings  
Burger King  
Carls Jr.  
Checkers  
Cheesecake Factory  
Chick-fil-A  
Chili's  
Chipotle  
Churches Chicken  
Cici's Pizza  
Dave & Busters  
Del Taco  
Gall & Gall  
Hard Rock Cafe  
Hooters

## IHOP

In-N-Out Burger  
Jack in the Box  
KFC  
Krystal Burgers  
Little Caesars  
McAlister's Deli  
McDonald's  
Noodles & Company  
O'Charley's  
On the Border  
Panda Express  
Pizza Hut  
Pizza Ranch  
Red Robin  
Schlotskey's  
Smashburger  
Starbucks  
Steak 'n Shake  
Texas Road House  
TGIF  
Quiznos  
Whataburger  
White Castle

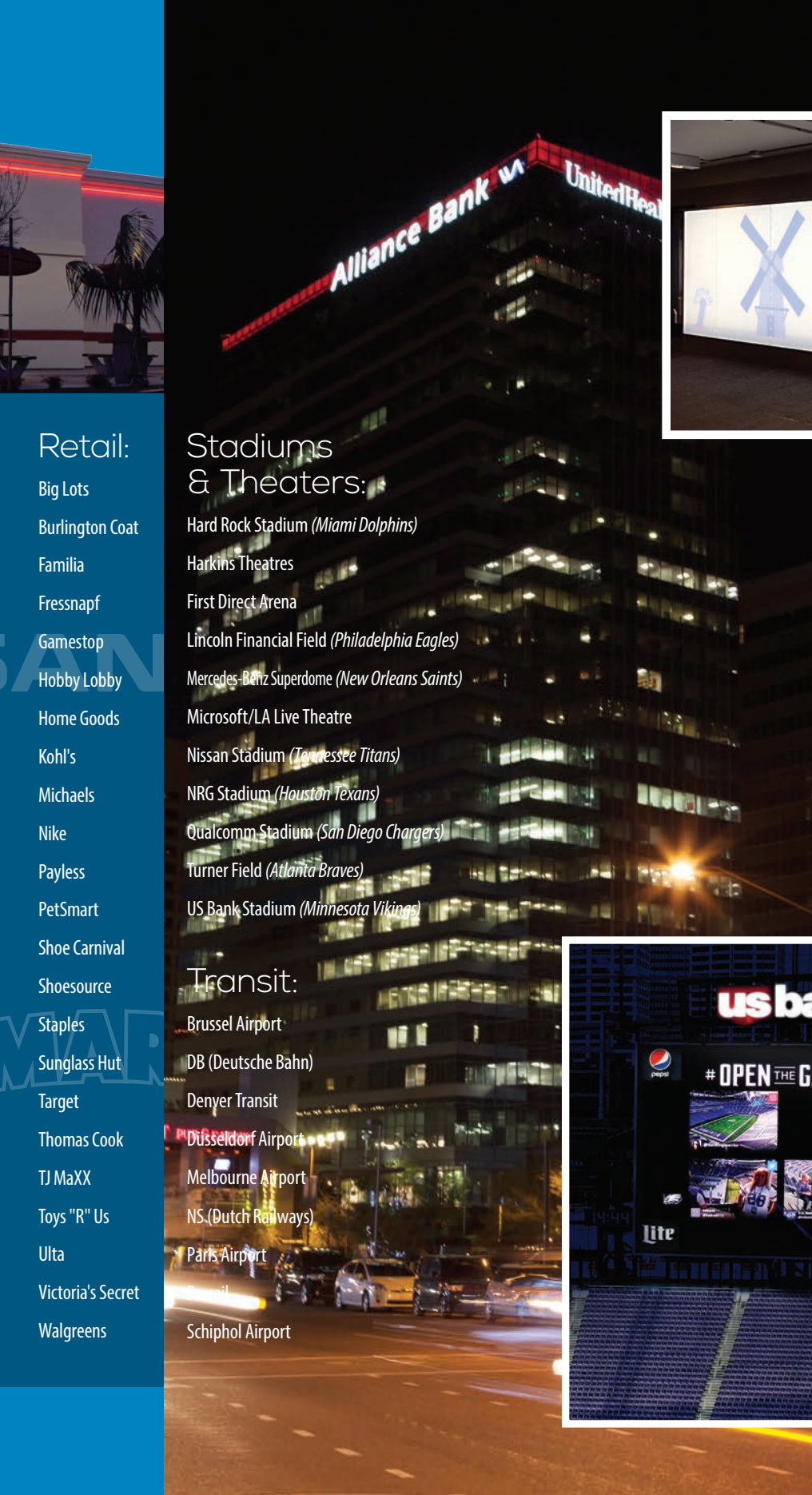
## Hotels & Hospitality:

Bilderberg Hotel  
The Drake Hotel  
Drury Inn and Suites  
Hilton Hotels Worldwide  
Holiday Inn  
Hotel Novotel  
Hyatt Place  
Motel 6  
Red Roof  
Sole on the Ocean  
Travelodge  
Whitebread Premier Inn  
Wild Horse Hotel

## Petroleum & Convenience:

Africa  
Avia  
BP  
Caltex  
Citgo  
Chevron  
Exxon  
EZ Mart  
HEM/Tamoil  
Mavericks  
OMV  
PKN Orlen  
Q8/Tango  
RaceTrac  
Shell  
SOL Petroleum  
Texaco  
Total  
United





**Retail:**

- Big Lots
- Burlington Coat
- Familia
- Fressnapf
- Gamestop
- Hobby Lobby
- Home Goods
- Kohl's
- Michaels
- Nike
- Payless
- PetSmart
- Shoe Carnival
- Shoesource
- Staples
- Sunglass Hut
- Target
- Thomas Cook
- TJ MaXX
- Toys "R" Us
- Ulta
- Victoria's Secret
- Walgreens

**Stadiums & Theaters:**

- Hard Rock Stadium (*Miami Dolphins*)
- Harkins Theatres
- First Direct Arena
- Lincoln Financial Field (*Philadelphia Eagles*)
- Mercedes-Benz Superdome (*New Orleans Saints*)
- Microsoft/LA Live Theatre
- Nissan Stadium (*Tennessee Titans*)
- NRG Stadium (*Houston Texans*)
- Qualcomm Stadium (*San Diego Chargers*)
- Turner Field (*Atlanta Braves*)
- US Bank Stadium (*Minnesota Vikings*)

**Transit:**

- Brussel Airport
- DB (Deutsche Bahn)
- Denyer Transit
- Düsseldorf Airport
- Melbourne Airport
- NS (Dutch Railways)
- Paris Airport
- Paris
- Schiphol Airport

**"Show me your friends and I'll show you your future."**

~ John Kuebler





# Channel Letter

SloanLED channel letter LED lighting products are designed for a wide range of channel letter applications, including face and halo lit, shallow to deep can depths, and routed acrylic letters.





# SloanLED Prism

Reimagined LED lens technology

- Brightest lighting option in its class
- Ideal lens shape for illuminating channel letters
- Use fewer modules for faster installation and lower cost per sign
- Versatile mounting options
- Current Technology (CCT)



## Specifications

<b>Dimensions L x W x H</b> .....	SloanLED Prism, HO.....	70 mm x 19 mm x 11 mm (2.75 in x 0.75 in x 0.44 in)
	Mini.....	25 mm x 18 mm x 11 mm (1 in x 0.72 in x 0.45 in)
	Colors.....	70 mm x 19 mm x 13 mm (2.75 in x 0.75 in x 0.50 in)
<b>LEDs per module</b> .....	SloanLED Prism, HO.....	3
	Mini.....	1
<b>Operating temperature</b> .....	SloanLED Prism, Mini...	-40° C to +70° C
	HO.....	-40° C to +60° C
<b>Protection class</b> .....		IP66 & IP68 <sup>1</sup>
<b>Binning</b> .....		MacAdam Step 3
<b>Life rating</b> .....	SloanLED Prism, Mini...	>60,000 hours
	HO.....	>50,000 hours
<b>Fastening</b> .....	SloanLED Prism, HO.....	Peel-n-stick and mechanical
	Mini.....	Peel-n-stick

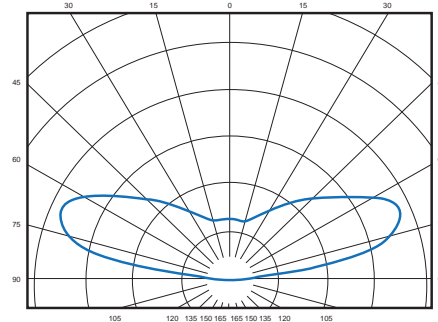
## Whites

Model	Modules per meter/foot	Color temperature	Part number	Optimal can depth	Power per module	Lumens per module (nominal)	Efficacy	Power capacity per SloanLED 60 W 12 VDC power supply	Packaging of 5 trays per carton
SloanLED Prism	3.3/m (1/ft)	6500 K	701269-6WSJ2-MB	75-200 mm (3-8")	1.12 W	124	111 lm/W	48 modules (14.6 m / 48.0 ft)	14.6 m / 48.0 ft (48 modules) per tray
	4.9/m (1.5/ft)	7100 K	701269-7WSJ1-MB					48 modules (9.8 m / 32.0 ft)	9.8 m / 32.0 ft (48 modules) per tray
		6500 K	701269-6WSJ1-MB						
		5700 K	701269-57SJ1-MB						
		5000 K	701269-5WSJ1-MB						
		4000 K	701269-4WSJ1-MB						
3000 K	701269-3WSJ1-MB								
Mini	7.4/m (2.25/ft)	6500 K	701269-6WMJ1-MB	50-100 mm (2-4")	0.46 W	44	95 lm/W	120 modules (16.3 m / 53.3 ft)	13.0 m / 42.7 ft (96 modules) per tray
HO	2.6/m (0.8/ft)	6500 K	701269-6WHJ1-MB	125-300 mm (5-12")	1.68 W	180	107 lm/W	32 modules (12.2 m / 40.0 ft)	12.2 m / 40.0 ft (32 modules) per tray
		5000 K	701269-5WHJ1-MB						

## Colors

Part number	Color	Nominal wavelength	Modules per meter/foot	Optimal can depth	Power per module	Lumens per module (nominal)	Efficacy	Power capacity per SloanLED 60 W 12 VDC power supply	Packaging of 5 trays per carton
701269-RDSJ3-MB	Red	628	6.6/m (2/ft)	75-200 mm (3-8")	0.72 W	24	33.5 lm/W	75 modules (11.4 m / 37.5 ft)	7.3 m / 24 ft (48 modules) per tray
701269-RDSJ1-MB									
701269-ORSJ1-MB	Orange	606	4.9/m (1.5/ft)						
701269-YLSJ1-MB	Yellow	589							
701269-GRSJ1-MB	Green	527							
701269-BLSJ1-MB	Blue	471							
								75 modules (15.2 m / 50 ft)	9.8 m / 32 ft (48 modules) per tray

## Luminous Intensity Distribution



<sup>1</sup> Prism IP68 test parameters are 1.3 m submersion for 30 minutes. Do not mount in submerged application or where module will be directly exposed to prolonged flowing or dripping water.

SloanLED channel letter products are covered by US and foreign patents pending and covered by one or more of the following US patents issued: 6,932,495, 7,160,140, 7,241,031, 7,520,771, 7,931,386 and European Patent No. 1756471.



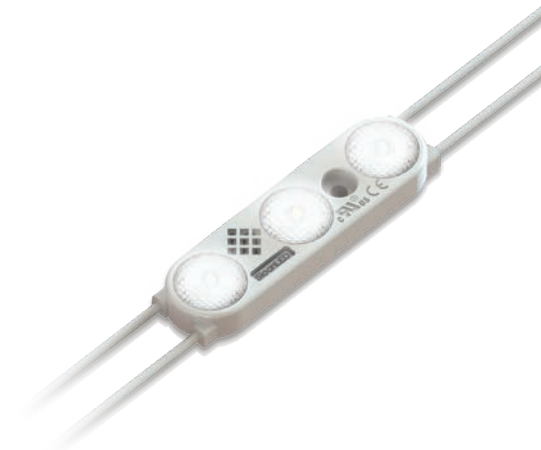
Use the online SloanLED Layout Estimator to get a quick SloanLED Prism design and material estimate for your sign. **Visit product page for details.**



# SloanLED Prism Enlighten

Breakthrough LED lens technology

- Longer lifespan – 3X the life of a typical LED (150,000+ hours)
- Low power for lower operating costs, up-front labor, and material expenses
- Widest, most even spread of light, to work in shallow and deep cans
- Industry leading 9-year part/5-year limited labor warranty
- Environmentally friendly



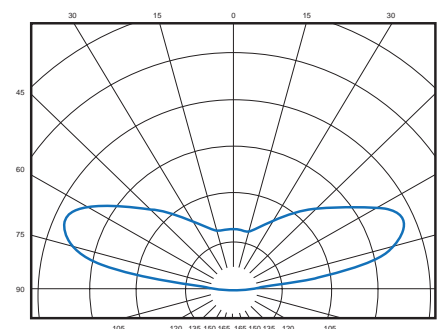
## Specifications

<b>Part number</b> .....	7100 K.....	701269-7WEJ1-MB
	6500 K.....	701269-6WEJ1-MB
	5700 K.....	701269-57EJ1-MB
	5000 K.....	701269-5WEJ1-MB
	4000 K.....	701269-4WEJ1-MB
	3000 K.....	701269-3WEJ1-MB
<b>Dimensions L x W x H</b> .....	70 mm x 19 mm x 11 mm (2.75 in x 0.75 in x 0.44 in)	
<b>LEDs per module</b> .....	3	
<b>Modules per m/ft</b> .....	4.9 / 1.5	
<b>Optimal can depth</b> .....	75-200 mm (3-8")	
<b>Operating temperature</b> .....	-40° C to +70° C	
<b>Protection class</b> .....	IP66 & IP68 <sup>1</sup>	
<b>Binning</b> .....	MacAdam Step 3	
<b>Power per module</b> .....	0.75 W	
<b>Efficacy</b> .....	7100 K, 6500 K, 5700 K, 5000 K..... 120 lm/W	
	4000 K..... 113 lm/W	
	3000 K..... 107 lm/W	

<sup>1</sup> Prism IP68 test parameters are 1.3 m submersion for 30 minutes. Do not mount in submerged application or where module will be directly exposed to prolonged flowing or dripping water.

<b>Fastening</b> .....	Peel-n-stick and mechanical
<b>Power capacity</b> .....	72 modules (14.6 m / 48.0 ft) per SloanLED 60 W 12 VDC power supply
<b>Packaging</b> .....	9.8 m / 32.0 ft (48 modules) per tray, 5 trays per carton
<b>Lumens per module (nominal)</b> ..	7100 K, 6500 K, 5700 K, 5000 K..... 90
	4000 K..... 85
	3000 K..... 80

## Luminous Intensity Distribution



## Density Guideline

Module color	Can depth (mm/in)	Max. stroke coverage per row (mm/in)		mm/in on center dark vinyl	mm/in on center perforated vinyl
		Single row	Multiple rows		
7100 K, 6500 K, 5700 K, 5000 K, 4000 K, 3000 K	75 mm / 3"	254 / 10	178 / 7 on center	152 / 6	127 / 5
	100 mm / 4"	305 / 12	229 / 9 on center	203 / 8	178 / 7
	127-203 mm / 5-8"	356 / 14	330 / 13 on center	305 / 12	279 / 11

These guidelines are intended to provide only an approximation of SloanLED Prism Enlighten product required for your sign, assuming an optimal balance of performance and cost. SloanLED is not responsible for the actual results based on the use of these guidelines.

**Notes:**

- 1) It is recommended that you first test LED density in sample letter/cabinet to evaluate brightness, uniformity and color.
- 2) Should you have questions or require assistance in testing, please contact your SloanLED customer service representative.
- 3) Products can be used in can depths deeper or shallower than listed above, but testing is recommended.



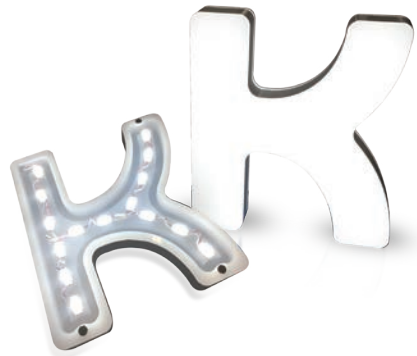
Use the online SloanLED Layout Estimator to get a quick SloanLED



# SloanLED Prism Nano

LED lighting solution for block acrylic signs and small channel letters

- Designed for applications as shallow as 25 mm (1")
- Individual modules for easy installation with no soldering and no PCB cutting
- Easy to mount and install on any channel letter shape



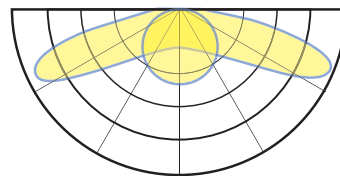
## Specifications

<b>Part number</b> .....	7200 K.....	701269-7WNJ1-MB
	6500 K.....	701269-6WNJ1-MB
	5000 K.....	701269-5WNJ1-MB
	4000 K .....	701269-4WNJ1-MB
	3000 K.....	701269-3WNJ1-MB
<b>Dimensions L x W x H</b> .....	16 mm x 8 mm x 9 mm (0.63 in x 0.33 in x 0.34 in)	
<b>LEDs per module</b> .....	1	
<b>Optimal can depth</b> .....	25-75 mm (1-3")	
<b>Lumens per module (nominal)</b> ..	7200 K, 6500 K,.....	33
	5000 K, 4000 K	
	3000 K.....	25
<b>Efficacy</b> .....	72000 K, 6500 K,.....	106 lm/W
	5000 K, 4000 K	
	3000 K.....	83 lm/W

1 U.S. and Canada only.  
2 For sign applications, only certified for use outside of U.S. and Canada.

SloanLED channel letter products are covered by US and foreign patents pending and covered by one or more of the following US patents issued: 6,932,495, 7,160,140, 7,241,031, 7,520,771, 7,931,386 and European Patent No. 1756471.

## Luminous Intensity Distribution



<b>Power per module</b> .....	0.31 W
<b>Color temperatures</b> .....	7200 K, 6500 K, 5000 K, 4000 K, 3000 K
<b>Operating temperature</b> .....	-30° C to +60° C
<b>Protection class</b> .....	IP66
<b>Life rating</b> .....	>60,000 hours
<b>Power capacity</b> .....	150 modules (6.0 m / 19.7 ft) per SloanLED 60 W 12 VDC power supply
<b>Fastening</b> .....	Peel-n-stick
<b>Packaging</b> .....	6.0 m / 19.7 ft (150 modules) per bag, 7 bags per carton



# SloanLED SE

Maximum efficiency, low cost solution

- Newest technology with 3 chips in one LED for brighter performance in a small package
- Optimal for applications 125 mm in depth
- Maximum efficiency at price point

## Specifications

<b>Part number</b> .....	701269-6WSK1-MB
<b>Dimensions L x W x H</b> .....	22 mm x 11 mm x 7 mm (0.85 in x 0.45 in x 0.28 in)
<b>Viewing angle</b> .....	120°
<b>LEDs per module</b> .....	1
<b>Modules per meter/foot</b> .....	8.2/2.5
<b>Operating temperature</b> .....	-40° C to +70° C
<b>Binning</b> .....	MacAdam Step 3
<b>Power per module</b> .....	0.43 W
<b>Efficacy</b> .....	108 lm/W
<b>Power capacity</b> .....	125 modules (15.2 m/50 ft) per SloanLED 60 W 12 VDC power supply

<b>Fastening</b> .....	Peel-n-stick
<b>Packaging</b> .....	6.1 m / 20 ft (50 modules) per tray, 10 trays per carton
<b>Color temperature</b> .....	6500 K
<b>Lumens per module</b> .....	46



For photobiological compliance, the illuminance Ethr at RG1/RG2 border is 813 lux.

SloanLED channel letter products are covered by US and foreign patents pending and covered by one or more of the following US patents issued: 6,932,495, 7,160,140, 7,241,031, 7,520,771, 7,931,386 and European Patent No. 1756471.

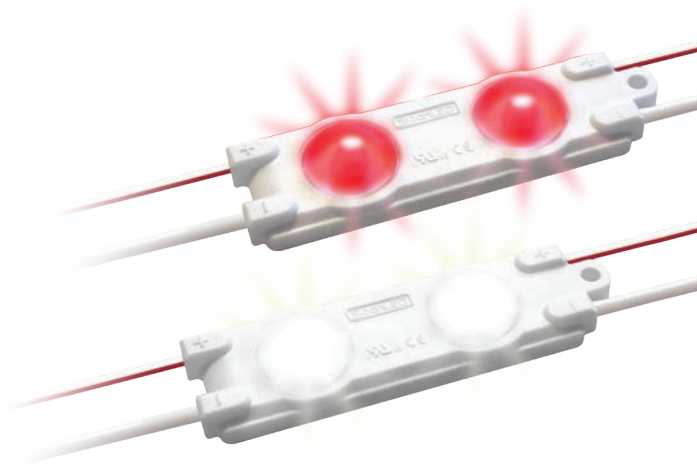
# VL Plus 3

Everyday standard face lit solutions

- Most powerful and efficient lighting option in its class
- Ideal for single row, 125 mm (5") deep channel letters
- Use fewer modules for faster installation and lower cost per sign
- Versatile mounting options

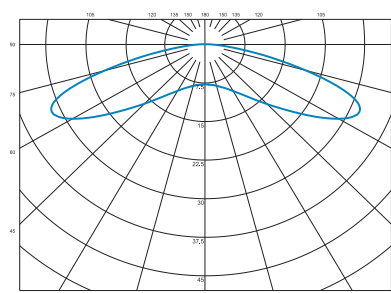
## Specifications

<b>Part number</b> .....	White .....	701269-6WSA3-MB
	Red .....	701269-RDSA3-MB
<b>Dimensions L x W x H</b> .....	55 mm x 17 mm x 7 mm (2.16 in x 0.68 in x 0.28 in)	
<b>Viewing angle</b> .....	160°	
<b>LEDs per module</b> .....	2	
<b>Modules per meter/foot</b> .....	4.6 / 1.4	
<b>Maximum coverage per row</b> .....	Can depth .....	127 mm (5 in)
	Coverage .....	254 mm (10 in)
<b>Operating temperature</b> .....	-40° C to +70° C	
<b>Power per module</b> .....	White .....	1.04 W
	Red .....	0.63 W
<b>Efficacy</b> .....	White .....	103 lm/W
	Red .....	32 lm/W
<b>Protection class</b> .....	IP66	
<b>Life rating</b> .....	>60,000 hours	
<b>Power capacity</b> .....	White .....	52 modules (11.3 m / 37.1 ft) per SloanLED 60 W 12 VDC power supply
	Red .....	86 modules (18.7 m / 61.4 ft) per SloanLED 60 W 12 VDC power supply
<b>Fastening</b> .....	Peel-n-stick and mechanical	



<b>Packaging</b> .....	White .....	11.3 m / 37.1 ft (52 modules) per bag, 25 bags per carton
	Red .....	18.7 m / 61.4 ft (86 modules) per bag, 15 bags per carton
<b>Color temperature/ nominal wavelength</b> .....	White .....	6500 K
	Red .....	623 nm
<b>Lumens per module</b> .....	White .....	107
	Red .....	20

## Luminous Intensity Distribution



SloanLED channel letter products are covered by US and foreign patents pending and covered by one or more of the following US patents issued: 6,932,495, 7,160,140, 7,241,031, 7,520,771, 7,931,386 and European Patent No. 1756471.

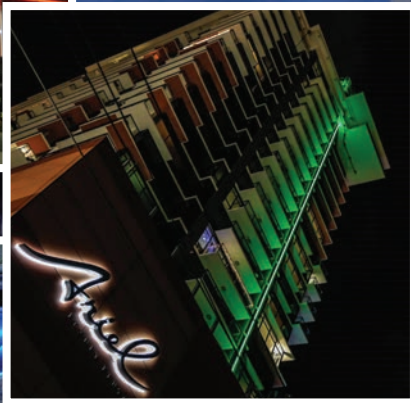


Use the online SloanLED Layout Estimator to get a quick VL Plus 3 design and material estimate for your sign. Visit product page for details.



# Border Tube & Accent

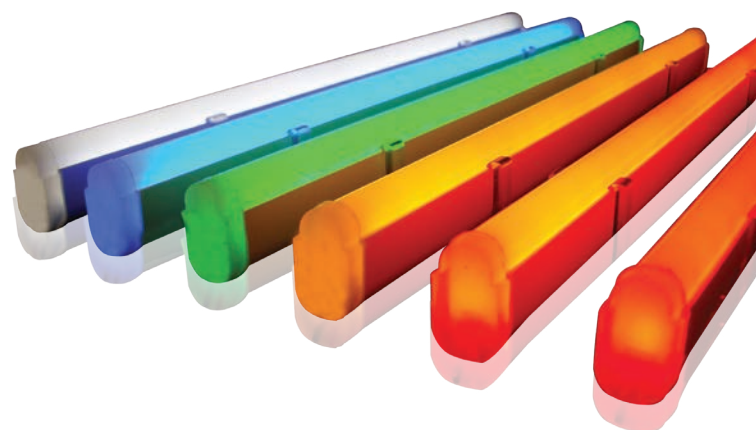
Border tubing and accent LED lighting allows for creative sign solutions. SloanLED offers three LED tubing solutions to fit your application.



# ColorLINE

Neon-inspired tubing

- **NEW** Classic colors retain hue in daytime
- Standard colors revert to neutral, frosted white when non-illuminated
- Slim profile similar to standard neon
- High impact acrylic: UV stable, hydrocarbon insensitive, and non-fading
- Product can be cut to custom lengths in the field



## Specifications

<b>Dimensions</b> .....	Width.....11 mm (0.44 in)
	Base width.....15 mm (0.59 in)
	Height.....25 mm (1.00 in)
	Lengths.....0.6 m (2 ft); 1.2 m (4 ft); 1.8 m (6 ft); 2.4 m (8 ft)
<b>Factory bends</b> .....	245 mm (9.75 in) radius (radial and flat bend)
<b>Approx. cut increments</b> .....	60 mm (2.4 in)
<b>In-field bends</b> .....	Radial bend.....5.8 m (19 ft)
	Flat bend.....1.8 m (6 ft)
<b>Operating temperature</b> .....	-40° C to +70° C
<b>Protection class</b> .....	IP66
<b>Binning</b> .....	MacAdam Step 3 <sup>1</sup>
<b>Power per meter/foot</b> .....	7.5 W/ 2.28 W
<b>Power capacity</b> .....	7.3 m (24 ft) per SloanLED 60 W 12 VDC power supply
<b>Colors</b> .....	<b>Standard</b> .....Red, Orange, Yellow, Green, Blue, White, Warm White
	<b>Classic</b> .....Ruby Red, Citrus Orange, Noviol Gold, Emerald Green, Bromo Blue
<b>Mounting</b> .....	Dual-position mounting clips (400381-25) orient in two directions
<b>Accessories</b> .....	Snap-on, frosted joint covers (701807) for clean finish
	Illuminated mitered corners:
	<b>Red/Ruby Red, Orange/Citrus Orange, Yellow/Noviol Gold, Emerald Green, Bromo Blue, White, Warm White</b>
	Inside corner.....701800-IC-Color
	Outside corner.....701800-OC-Color
	Step corner.....701800-SC-Color
	<b>Green, Blue</b>
	Inside corner.....701800A-IC-Color
	Outside corner.....701800A-OC-Color
	Step corner.....701800A-SC-Color

<sup>1</sup> White (P/N 701800-W-X) and Warm White (P/N 701800-WW-X) only.



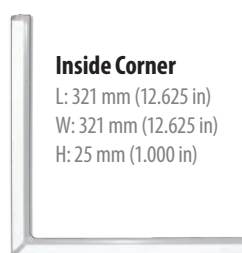
ColorLINE is covered by US and foreign patents pending and covered by the following US patents issued: 6,776,504, 6,969,179, and 7,192,157

## Ordering information

Standard Colors		Classic Colors	
Color	Part number	Color	Part number
Red	701800-R-X	Ruby Red	701800C-R-X
Orange	701800-O-X	Citrus Orange	701800C-O-X
Yellow	701800-Y-X	Noviol Gold	701800C-Y-X
Green	701800A-G-X	Emerald Green	701800C-G-X
Blue	701800A-B-X	Bromo Blue	701800C-B-X
White	701800-W-X	NOTE: X = desired length. See table below for length codes.	
Warm White	701800-WW-X		

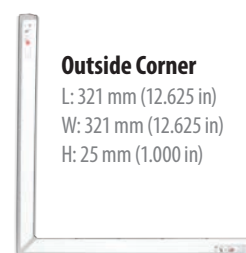
Code	Item description	Actual length
2	0.6-m (2-ft) Tube	626 mm (24.66 in)
4	1.2-m (4-ft) Tube	1236 mm (48.66 in)
6	1.8-m (6-ft) Tube	1846 mm (72.66 in)
8	2.4-m (8-ft) Tube	2455 mm (96.66 in)

## Accessories



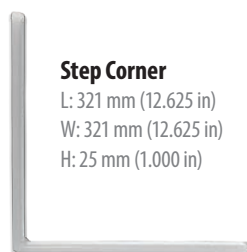
### Inside Corner

L: 321 mm (12.625 in)  
W: 321 mm (12.625 in)  
H: 25 mm (1.000 in)



### Outside Corner

L: 321 mm (12.625 in)  
W: 321 mm (12.625 in)  
H: 25 mm (1.000 in)



### Step Corner

L: 321 mm (12.625 in)  
W: 321 mm (12.625 in)  
H: 25 mm (1.000 in)



### Mounting Clip

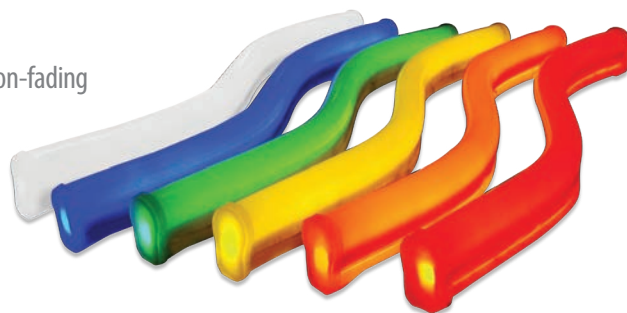
400381-25



# FlexiBRITE

## Flexible LED tubing

- Colors retain hue in the daytime
- Optically modified silicone extrusion: UV stable, hydrocarbon insensitive, and non-fading
- Extremely flexible LED tubing
- Convenient mounting clips and mounting tracks
- Product can be cut to custom lengths in the field



## Specifications

<b>Part number</b> .....	Ruby Red Kit .....	701499-R-Size
	Citrus Orange Kit.....	701499C-O-Size
	Noviol Gold Kit.....	701499C-Y-Size
	Emerald Green Kit....	701499D-G-Size
	Bromo Blue Kit	701499D-B-Size
	Snow White Kit.....	701499D-W-Size
<b>Dimensions</b> .....	Width.....	15 mm (0.6 in)
	Base width.....	13 mm (0.5 in)
	Height.....	25 mm (1.0 in)
	Lengths.....	0.6-m (2-ft); 3.0-m (10-ft)
<b>In-field bends</b> .....	Radial bend.....	305 mm (12 in)
	Flat bend.....	25 mm (1 in)
<b>Operating temperature</b> .....	-40° C to +70° C	
<b>Protection class</b> .....	IP66	
<b>Power per meter/foot</b> .....	9.2 W/2.8 W	
<b>Power capacity</b> .....	6 m (20 ft) per SloanLED 60 W 12 VDC power supply	

<b>Colors</b> .....	Ruby Red, Citrus Orange, Noviol Gold, Emerald Green, Bromo Blue, Snow White
<b>Mounting</b> .....	Mounting Clips ..... 701572-25 Mounting Track ..... 701456-10
<b>Packaging</b> .....	0.6-m (2-ft) or 3.0-m (10-ft) kit with end caps and mounting clips (3.0-m [10-ft] kit includes 2 end caps and 25 mounting clips, 0.6-m [2-ft] kit includes 2 end caps and 6 mounting clips)

Item description	Cut increments
Ruby Red, Citrus Orange, Noviol Gold Kits	50 mm (2 in)
Emerald Green, Bromo Blue, Snow White Kits	38 mm (1.5 in)



FlexiBRITE is covered by US and foreign patents pending and covered by the following US patents issued: 6,776,504 and 7,213,941 and European Patent No. 1756471

## Accessories



**Mounting Clip**  
701572-25



**Mounting Track**  
701456-10

# LEDStripe

Large-profile LED tubing

- **NEW** colors: Pink, Purple, and True Yellow
- Daytime color when non-illuminated
- High impact acrylic: UV stable, hydrocarbon insensitive, and non-fading
- Can be factory bent to minimum 305 mm (12 in) radius
- Product can be cut to custom lengths in the field



## Specifications

<b>Dimensions</b> .....	Width.....	25 mm (1.00 in)
	Height.....	43 mm (1.68 in)
	Lengths.....	0.3-m (1-ft); 0.6-m (2-ft);
		1.2-m (4-ft); 1.8-m (6-ft)
	2.4-m (8-ft); 3.0-m (10-ft)	

**Factory bends**..... 305 mm (12 in) radius (radial and flat bend)

**In-field bends**..... Radial bend.....4.25 m (14 ft)  
Flat bend.....5.8 m (19 ft)

**Operating temperature**..... -40° C to +70° C

**Protection class** ..... IP66

**Binning**..... MacAdam Step 3<sup>1</sup>

**Power per meter/foot** ..... 5.0 W/1.5 W (except 0.3-m [1-ft] piece at 3.0 W on average)

**Power capacity** ..... 18.3 m (60 ft) per SloanLED 100 W 24 VDC power supply

**Colors** ..... Red, Pink, Orange, Amber, True Yellow, Green, Blue, Purple, White (6500 K), Lemon Yellow











**Mounting**..... Round.....701156  
pre-mounting buttons  
Slide and mount ..400775  
rectangle mounting buttons

**Accessories**..... Snap-on, colored joint and corner covers for clean finish:  
Joint.....701361-X  
Outside corner .....701362-X  
Inside corner .....701363-X  
Step corner .....701364-X

<sup>1</sup> Purple (P/N 701189-PR-X), White (P/N 701189E-W-X), and True Yellow (P/N 701189-YT-X) only.

Item description	Approx. cut increments <sup>1</sup>	Actual length
0.3-m (1-ft) Tube	25 mm (1 in)	33.0 cm (13.0 in)
0.6-m (2-ft) Tube	75 mm (3 in)	63.5 cm (25.0 in)
1.2-m (4-ft) Tube		124.5 cm (49.0 in)
1.8-m (6-ft) Tube		186.7 cm (73.5 in)
2.4-m (8-ft) Tube		247.7 cm (97.5 in)
3.0-m (10-ft) Tube		308.6 cm (121.5 in)

## Color Chart

	Color	Part number <sup>2</sup>
	Red	701189-xH
	Pink	701189-PK-x
	Orange	701189-A-xD
	Amber	701189-Y-xD
	True Yellow	701189-YT-x
	Green	701189A-G-xD
	Blue	701189A-B-xD
	Purple	701189-PR-x
	White	701189E-W-x
	Lemon Yellow	701189E-WY-x

Lemon Yellow illuminates lighter than its daytime color

<sup>2</sup> "x" in part number denotes length (0.3-m [1-ft]; 0.6-m [2-ft]; 1.2-m [4-ft]; 1.8-m [6-ft]; 2.4-m [8-ft]; or 3.0-m [10-ft])

Lemon Yellow daytime color is Amber

## Accessories

### Joint & Corner Covers



### Mounting Buttons



LEDStripe is covered by US and foreign patents pending and covered by the following US patents issued: 6,776,504, 6,969,179, and 7,192,157



# Power Supplies

SloanLED power supplies are engineered to last and are among the most rugged in their class.

# SloanLED Power Supplies

## Specifications

### 12 VDC – Compatible with SloanLED 12 VDC products

Model	Part number	Dimensions	Nominal input voltage	Max. input current	Power output	Location rating	Operating temperature	Protection class
<b>Self-Contained 20 W</b>	701680	118 mm × 35 mm × 26 mm (4.65 in × 1.38 in × 1.03 in)	100-240 VAC, 50-60 Hz	0.55 A	20 W @ 12 VDC, Class 2 output <sup>1</sup>	Dry and damp locations	-30° C to +60° C	IP67
<b>Compact 12/25 W<sup>4</sup></b>	410174	148 mm × 40 mm × 32 mm (5.83 in × 1.58 in × 1.26 in)	100-277 VAC, 50-60 Hz	0.40 A	25 W @ 12 VDC, Class 2 output	Dry and damp locations	-40° C to +70° C	IP67
<b>60C1 60 W</b>	701507-60C1	142 mm × 46 mm × 33 mm (5.6 in × 1.8 in × 1.3 in)	100-277 VAC, 50-60 Hz	0.80 A	60 W @ 12 VDC, Class 2 output <sup>1</sup>	Dry and damp locations	-40° C to +60° C, natural convection cooling	IP54
<b>60W1 60 W</b>	701507-60W1	264 mm × 51 mm × 37 mm (10.40 in × 1.99 in × 1.45 in)	100-240 VAC, 50-60 Hz	0.85 A	60 W @ 12 VDC, Class 2 output <sup>1</sup>	Dry, damp, and wet locations	-40° C to +60° C	IP68
<b>60W2 60 W</b>	701507-60W2	268 mm × 58 mm × 50 mm (10.55 in × 2.28 in × 1.98 in)	100-277 VAC, 50-60 Hz	0.80 A	60 W @ 12 VDC, Class 2 output <sup>1</sup>	Dry, damp, and wet locations	-40° C to +60° C, Derate to 50% of max load at +70° C	IP68
<b>MOD277 60 W</b>	701507-MOD277	267 mm × 64 mm × 38 mm (10.5 in × 2.5 in × 1.5 in)	277-347 VAC, 50-60 Hz	0.50 A	60 W @ 12 VDC, Class 2 output <sup>1</sup>	Dry, damp, and wet locations	-40° C to +60° C	IP68
<b>MODW(E)<sup>2</sup> 60 W</b>	701507-MODW(E)	229 mm × 64 mm × 38 mm (9.0 in × 2.5 in × 1.5 in)	100-240 VAC, 50-60 Hz	1.00 A	60 W @ 12 VDC, Class 2 output <sup>1</sup>	Dry, damp, and wet locations	-40° C to +60° C	IP68
<b>120D1 120 W</b>	701507-120D1	244 mm × 56 mm × 43 mm (9.6 in × 2.2 in × 1.7 in)	100-277 VAC, 50-60 Hz	1.70 A	120 W @ 12 VDC, two (2) Class 2 outputs <sup>1</sup>	Dry and damp locations	-40° C to +60° C, natural convection cooling	IP54

### 24 VDC – Compatible with SloanLED 24 VDC products

Model	Part number	Dimensions	Nominal input voltage	Max. input current	Power output	Location rating	Operating temperature	Protection class
<b>24 VDC 100 W</b> <i>Dry, damp, and wet</i>	701895-24C	260 mm × 44 mm × 30 mm (10.25 in × 1.73 in × 1.19 in)	100-240 VAC, 50-60 Hz	2.0 A	100 W @ 24 VDC, Class 2 output <sup>1</sup>	Dry, damp, and wet locations	-30° C to +60° C	IP68
<b>24 VDC 100 W</b> <i>Dry and damp</i>	701936	240 mm × 43 mm × 28 mm (9.45 in × 1.76 in × 1.1 in)	120-277 VAC, 50-60 Hz	0.95 A @ 120V, 0.40 A @ 277V	100 W @ 24 VDC, Class 2 output <sup>1</sup>	Dry and damp locations	-40° C to +50° C	IP54 <sup>3</sup>
<b>Compact 24/40 W<sup>4</sup></b>	410175	163 mm × 43 mm × 32 mm (6.40 in × 1.70 in × 1.26 in)	100-277 VAC, 50-60 Hz	0.6 A	40 W @ 24 VDC, Class 2 output <sup>1</sup>	Dry and damp locations	-40° C to +60° C ambient (Derate to 80% of max load at +60°)	IP67

1 North America only.

2 3rd part independent testing: Approved thermal shock, approved underwater thermal cycling.

3 Nominally.

4 For sign applications, only certified for use outside of U.S. and Canada.

## Wire Gauge Distance Chart

### for Power Limited Tray Cable (PLTC)

When the distance increases between the secondary side of the power supply and the first LED in a letter or the beginning of a tubing run, the gauge or wire needed will change as follows:

#### 24 VDC, 60W1, 60W2, Compact 24/40, MOD277, & MODW(E)

Distance from power supply	Wire gauge
0 m (0 ft) to 4.6 m (15 ft) 18 AWG (1 mm <sup>2</sup> ) + 1.5 m (5 ft) of 18 AWG (1 mm <sup>2</sup> )	18
4.6 m (15 ft) to 15.2 m (50 ft) 14 AWG (2.5 mm <sup>2</sup> ) + 1.5 m (5 ft) of 18 AWG (1 mm <sup>2</sup> )	14
15.2 m (50 ft) to 30.5 m (100 ft) 12 AWG (4 mm <sup>2</sup> ) + 1.5 m (5 ft) of 18 AWG (1 mm <sup>2</sup> )	12
30.5 m (100 ft) to 45.7 m (150 ft) 10 AWG (6 mm <sup>2</sup> ) + 1.5 m (5 ft) of 18 AWG (1 mm <sup>2</sup> )	10

NOTE: MODW(E), 60W1, 60W2, MOD277, and 701895 power supplies come from the factory with 1.5 m (5 ft) of 18 AWG (1 mm<sup>2</sup>) wire in place on the secondary side. 410175 power supply comes from the factory with 0.3 m (1 ft) of 18 AWG (1 mm<sup>2</sup>) wire in place on the secondary side.

#### 60C1, 120D1, Compact 12/25, & Self-Contained 20

Distance from power supply	Wire gauge
0 m (0 ft) to 4.6 m (15 ft) 18 AWG (1 mm <sup>2</sup> ) + 203 mm (8 in) of 18 AWG (1 mm <sup>2</sup> )	18
4.6 m (15 ft) to 15.2 m (50 ft) 14 AWG (2.5 mm <sup>2</sup> ) + 203 mm (8 in) of 18 AWG (1 mm <sup>2</sup> )	14
15.2 m (50 ft) to 36.6 m (120 ft) 12 AWG (4 mm <sup>2</sup> ) + 203 mm (8 in) of 18 AWG (1 mm <sup>2</sup> )	12
36.6 m (120 ft) to 45.7 m (150 ft) 10 AWG (6 mm <sup>2</sup> ) + 203 mm (8 in) of 18 AWG (1 mm <sup>2</sup> )	10

NOTE: 60C1, 120D1, Compact 12/25, and Self-Contained 20 power supplies come from the factory with 203 mm (8 in) of 18 AWG (1 mm<sup>2</sup>) wire in place on the secondary side.



# Sign Cabinet / Box

Sign cabinet/box LED lighting from SloanLED is designed for single and double sided and narrow to large box and cloud signs.

It's easy to install and is a great solution for new and retrofit applications.



# PosterBOX 3

Large, shallow fabric-faced light box illumination

- Bright, even illumination in large cabinets with depths as shallow as 75 mm (3 in) for single-sided applications, 100 mm (4 in) for double-sided applications, and up to 3 m (10 ft) in height
- High efficiency and long life
- Built-in module spacer eliminates measuring, yielding perfect results every time



## Specifications

<b>Part number</b> .....	Short.....701946-6WSRP1
	Long.....701946-6WLRP1
<b>Dimensions L × W × H</b> .....	Short.....251 mm × 38 mm × 19 mm (9.89 in × 1.50 in × 0.74 in)
	Long.....501 mm × 38 mm × 19 mm (19.73 in × 1.50 in × 0.74 in)
<b>Viewing angle</b> .....	12.2° × 44.8° illumination
<b>LEDs per assembly</b> .....	Short.....3
	Long.....6
<b>Color temperature (nominal)</b> .....	6500 K
<b>Minimum cabinet depth</b> .....	Single-sided.....75 mm (3 in)
	Double-sided.....100 mm (4 in)
<b>Operating temperature</b> .....	-40° C to +70° C
<b>Protection class</b> .....	IP66
<b>Life rating</b> .....	>60,000 hours

<b>Power per module</b> .....	Short.....7.2 W
	Long.....14.0 W
<b>Efficacy</b> .....	Short.....118 lm/W
	Long.....121 lm/W
<b>Power capacity<sup>1</sup></b> .....	<b>Per SloanLED 100 W 24 VDC power supply</b>
	Short.....6 modules
	Long.....6 modules
<b>Fastening</b> .....	Mechanical fasteners, Peel-n-stick (optional)
<b>Packaging</b> .....	6 assemblies per tray, 5 trays per carton
<b>Lumens per assembly</b> .....	Short.....850
	Long.....1700

<sup>1</sup> Any combination thereof not to exceed power rating of power supply.



**Green Signage**

PosterBOX™ 3 is licensed under: Patents CN200680037992.9, DE202006020673.6, NL1030161, US6932495,



# PosterBOX

Side illumination for shallow or narrow light boxes

- Side illuminated lighting for shallow to standard sign cabinets 100 mm (4") to 200 mm (8") in depth
- Fanflare™ technology projects light in a fan pattern to evenly illuminate sign face



## Specifications

<b>Part number</b> .....	White (6500 K) .....	701946-CWPBM
	White (5000 K) .....	701946-NWPBM
<b>Dimensions L x W x H</b> .....	220 mm x 44 mm x 23 mm (8.67 in x 1.74 in x 0.92 in)	
<b>LEDs per module</b> .....	3	
<b>Light coverage<sup>1</sup></b> .....	1.2 m (4 ft)	
<b>Module spacing</b> .....	Cabinet depth .....	Center-to-center
	≤10cm (4 in) .....	30 cm (12 in)
	>10 cm (4 in) to ≤20 cm (8 in) .....	45 cm (18 in)
<b>Operating temperature</b> .....	-40° C to +70° C	
<b>Protection class</b> .....	IP66	
<b>Special feature</b> .....	FanFlare lens technology	
<b>Power per module</b> .....	6.7 W	
<b>Efficacy</b> .....	82 lm/W	
<b>Power capacity</b> .....	8 modules per SloanLED 60 W 12 VDC power supply	
<b>Fastening</b> .....	Peel-n-stick and mechanical	
<b>Packaging</b> .....	10 modules and FlareShields™ per carton	
<b>Color temperatures</b> .....	6500 K, 5000 K	
<b>Lumens per module</b> .....	550	
<b>Accessory</b> .....	FlareShield (401059) for shallower applications to eliminate hot spots	

## Accessories



**FlareShield**  
401059  
Each carton of PosterBOX comes with 10 FlareShields



Green Signage

# PosterBOX Slim 2

Side illumination for shallow or narrow light boxes

- Optimal for single and double-sided sign cabinets as shallow as 50 mm (2"), such as: Indoor textile prints and movie posters



## Specifications

<b>Part number</b> .....	White (6500 K) .....	701946-6WXP2
	White (5000 K) .....	701946-5WXP2
<b>Dimensions L x W x H</b> .....	124 mm x 26 mm x 16 mm (4.87 in x 1.00 in x 0.61 in)	
<b>LEDs per module</b> .....	3	
<b>Light coverage<sup>1</sup></b> .....	0.6 m (2 ft)	
<b>Modules per meter/foot</b> .....	6.5 / 2	
<b>Minimum box depth</b> .....	50 mm (2 in), single or double-sided	
<b>Operating temperature</b> .....	-40° C to +70° C	
<b>Protection class</b> .....	IP66	
<b>Viewing angle</b> .....	15° x 43°	
<b>Power per module</b> .....	1.8 W	
<b>Efficacy</b> .....	100 lm/W	
<b>Power capacity</b> .....	30 modules per SloanLED 60 W 12 VDC power supply	
<b>Fastening</b> .....	Peel-n-stick and mechanical	
<b>Packaging</b> .....	38 modules per tray, 3 trays per carton	
<b>Color temperatures</b> .....	6500 K, 5000 K	
<b>Lumens per module</b> .....	180	

<sup>1</sup> Testing highly recommended as all substrates and graphics vary.

# SignBOX 3

LED illumination for single or double-sided sign boxes

- Micro prism lens technology for bright, uniform illumination, wider spacing, IP66 and IP68 rated<sup>1</sup>
- High efficacy at 156 lm/W
- Available in Strapped (single and double-sided) and Module (single-sided) options
- Illuminates 125 mm (5") from face

## Specifications

<b>Part number</b> .....	Strapped single-sided ..... 6500 K .....	701946-6WLS1
	5000 K .....	701946-5WLS1
Strapped double-sided.....	6500 K .....	701946-6WDS1
	5000 K .....	701946-5WDS1
Module .....	6500 K .....	701946-6WLS1
	5000 K .....	701946-5WLS1
<b>Dimensions L × W × H</b> .....	Strapped single-sided/.....	137 mm × 47 mm × 8 mm
	Strapped double-sided	(5.4 in × 1.9 in × 0.3 in)
		60 modules per 18.3 m (60 ft) chain
Module .....	104 mm × 35 mm × 10 mm	(4.1 in × 1.4 in × 0.4 in)

**LEDs per side** ..... 8

**Modules per meter (foot)**... 3.3 (1)

**Coverage per row** ..... 305 mm (12 in)

**Optimal light throw**..... 125 - 300 mm (5 - 12 in) from face

**Operating temperature**... -40° C to +70° C

**Protection class** ..... IP66 & IP68<sup>1</sup>

**Binning**..... MacAdam Ellipse

**Life rating** ..... >60,000 hours

**Power per module**..... Strapped single-sided/Module ..... 1.92 W  
Strapped double-sided ..... 3.84 W

**Efficacy** ..... 156 lm/W

**Power capacity** ..... **Per SloanLED 100 W 24 VDC power supply**  
Strapped single-sided/Module ..... 48 modules  
Strapped double-sided ..... 24 modules

**Fastening** ..... Strapped single and ..... Clips with mechanical fasteners  
strapped double-sided  
Module ..... Peel-n-stick

**Packaging** ..... Strapped single..... 60 modules per carton,  
and double-sided 40 clips included  
Module ..... 3 trays, 48 modules per tray

**Color temperatures** ..... 6500 K, 5000 K

**Lumens per module**..... Strapped single-sided/Module ..... 300  
Strapped double-sided ..... 600

**Mounting hardware** ..... Bracket ..... Bag of 10 ..... 402107-10  
Clip..... Bag of 20 ..... 402106-20  
Coupler ..... Bag of 10 ..... 402108-10

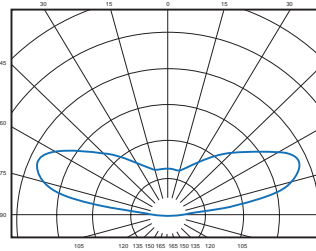
<sup>1</sup> IP68 test parameters are 1.3 m submersion for 30 minutes. Do not mount in submerged application or where module will be directly exposed to prolonged flowing or dripping water.



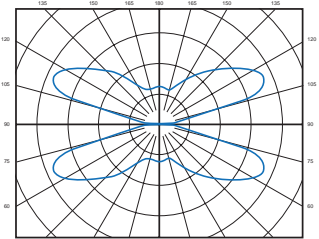
SignBOX™ 3 is covered by US and foreign patents pending.

## Luminous Intensity Distribution

**Strapped single-sided / Module**



**Strapped double-sided**



## Accessories



**Bracket**  
402107-10



**Coupler**  
402108-10



**Clip**  
402106-20  
Each carton of SignBOX 3 comes with 40 clips



Use the online SloanLED Layout Estimator to get a quick SignBOX 3 design and material estimate for your sign. Visit product page for details.



# SignBOX II

LED illumination for single or double-sided sign boxes

- Mounted on flexible straps for easy transportation and installation, saving time and money
- Secures to existing fluorescent wireways or sign structure
- Available in single and double-sided options
- Illuminates 125 mm (5") from face
- Constant Current Technology (CCT)

## Specifications

<b>Part number</b> .....	Single-sided.....6500 K .....	701946-6WS201
	Single-sided.....5000 K .....	701946-5WS201
	Double-sided.....6500 K .....	701946-6WD201
	Double-sided.....5000 K .....	701946-5WD201
<b>Dimensions L x W x H</b> .....	216 mm x 26 mm x 8 mm	
	(8.5 in x 1.0 in x 0.3 in)	
	60 modules per 6.1 m (20 ft) chain	
<b>Viewing angle</b> .....	120°	
<b>LEDs per module</b> .....	Single-sided.....	3
	Double-sided.....	6
<b>Modules per meter (foot)</b> .....	10 (3)	
<b>Coverage per row</b> .....	300 mm (12 in)	
<b>Optimal light throw</b> .....	125 - 300 mm (5 - 12 in) from face	
<b>Operating temperature</b> .....	-40° C to +70° C	
<b>Protection class</b> .....	IP66	
<b>Life rating</b> .....	>60,000 hours	
<b>Special feature</b> .....	Cuttable in 100 mm (4 in) increments	



<b>Power per module</b> .....	Single-sided.....	0.90 W
	Double-sided.....	1.80 W
<b>Efficacy</b> .....	117 lm/W	
<b>Power capacity</b> .....	<b>Per SloanLED 60 W 12 VDC power supply</b>	
	Single-sided.....	60 modules
	Double-sided.....	30 modules
<b>Fastening</b> .....	Clamps with mechanical fasteners	
<b>Packaging</b> .....	60 modules per carton, 8 clamps included	
<b>Color temperatures</b> .....	6500 K, 5000 K	
<b>Lumens per module</b> .....	Single-sided.....	105
	Double-sided.....	210
<b>Mounting hardware</b> .....	Bracket.....	Bag of 10 ..... 401309-10
	Clamp.....	Bag of 16 ..... 410155-16
	Coupler .....	Bag of 10 ..... 401330-10



SignBOX™ II is covered by US and foreign patents pending.

## Accessories



**Clamp**  
410155-16  
Each carton of SignBOX II comes with 8 clamps.



**Bracket**  
401309-10  
Optional – Sold in bags of 10.



**Coupler**  
401330-10  
Optional – Sold in bags of 10.



Use the online SloanLED Layout Estimator to get a quick SignBOX II design and material estimate for your sign. Visit product page for details.

# SignBOX RapidStick

Single or double-sided sign box illumination

- Now available in 12 different sizes
- Bright, even 360-degree illumination
- Uniform illumination at 150 mm (6") from face
- High efficiency and long life
- Fast field retrofits with existing sockets



## Specifications

Size (nominal)	Part number	Dimensions L x W x H	LEDs per lamp	Efficacy	Packaging Lamps per carton	Lumens per lamp
0.46 m (18 in)	701972-6WD181	399.3 mm x 50.8 mm x 50.8 mm (15.72 in x 2.00 in x 2.00 in)	16	122 lm/W	16	802
0.61 m (24 in)	701972-6WD241	551.7 mm x 50.8 mm x 50.8 mm (21.72 in x 2.00 in x 2.00 in)	20	127 lm/W	16	1021
0.76 m (30 in)	701972-6WD301	704.1 mm x 50.8 mm x 50.8 mm (27.72 in x 2.00 in x 2.00 in)	28	129 lm/W	16	1430
0.91 m (36 in)	701972-6WD361	856.5 mm x 50.8 mm x 50.8 mm (33.72 in x 2.00 in x 2.00 in)	36	125 lm/W	16	1671
1.07 m (42 in)	701972-6WD421	1008.9 mm x 50.8 mm x 50.8 mm (39.72 in x 2.00 in x 2.00 in)	44	127 lm/W	16	2232
1.22 m (48 in)	701972-6WD481	1161.3 mm x 50.8 mm x 50.8 mm (45.72 in x 2.00 in x 2.00 in)	48	128 lm/W	16	2451
1.52 m (60 in)	701972-6WD601	1466.1 mm x 50.8 mm x 50.8 mm (57.72 in x 2.00 in x 2.00 in)	64	127 lm/W	12	3253
1.63 m (64 in)	701972-6WD641	1567.7 mm x 50.8 mm x 50.8 mm (61.72 in x 2.00 in x 2.00 in)	68	128 lm/W	12	3464
1.83 m (72 in)	701972-6WD721	1770.9 mm x 50.8 mm x 50.8 mm (69.72 in x 2.00 in x 2.00 in)	76	129 lm/W	12	3558
2.13 m (84 in)	701972-6WD841	2075.7 mm x 50.8 mm x 50.8 mm (81.72 in x 2.00 in x 2.00 in)	92	127 lm/W	8	4683
2.44 m (96 in)	701972-6WD961	2380.5 mm x 50.8 mm x 50.8 mm (93.72 in x 2.00 in x 2.00 in)	104	129 lm/W	8	5311
3.05 m (120 in)	701972-6WD1201	2990.1 mm x 50.8 mm x 50.8 mm (117.72 in x 2.00 in x 2.00 in)	132	129 lm/W	8	5337

**Viewing angle** ..... 360°

**Color temperature (nominal)** .... 6500 K

**Optimum cabinet depth** ..... 406 mm (16") deep (double-sided)

**Operating temperature** ..... -40° C to +70° C

**Life rating** ..... >60,000 hours

**Fastening** ..... Fluorescent lampholders



SignBOX RapidStick is covered by US and foreign patents pending.



# SloanLED PrismBEAM

LED solution for retrofitting sign cabinets

- Available in all standard lamp sizes
- Easy installation using existing sockets, requiring no connectors or adapters
- Available in single and double-sided options
- Uniform illumination at 200 mm (8") optimum, up to 400 mm (16") maximum from face
- Product can be cut to custom lengths in the field



## Specifications

Lengths		Part number		Modules per assembly		Lumens per assembly		Packaging
Nominal	Actual	Single-sided	Double-sided	Single-sided	Double-sided	Single-sided	Double-sided	Lamps per carton
0.46 m (18 in)	0.40 m (15.72 in)	701972-6WPS181	701972-6WPD181	2	4	360	720	8
0.61 m (24 in)	0.55 m (21.72 in)	701972-6WPS241	701972-6WPD241	3	6	540	1080	8
0.76 m (30 in)	0.70 m (27.72 in)	701972-6WPS301	701972-6WPD301	3	6	540	1080	8
0.91 m (36 in)	0.86 m (33.72 in)	701972-6WPS361	701972-6WPD361	4	8	720	1440	8
1.07 m (42 in)	1.01 m (39.72 in)	701972-6WPS421	701972-6WPD421	5	10	900	1800	8
1.22 m (48 in)	1.16 m (45.72 in)	701972-6WPS481	701972-6WPD481	6	12	1080	2160	16
1.52 m (60 in)	1.47 m (57.72 in)	701972-6WPS601	701972-6WPD601	7	14	1260	2520	16
1.63 m (64 in)	1.57 m (61.72 in)	701972-6WPS641	701972-6WPD641	8	16	1440	2880	8
1.83 m (72 in)	1.77 m (69.72 in)	701972-6WPS721	701972-6WPD721	9	18	1620	3240	16
2.13 m (84 in)	2.08 m (81.72 in)	701972-6WPS841	701972-6WPD841	10	20	1800	3600	8
2.44 m (96 in)	2.38 m (93.72 in)	701972-6WPS961	701972-6WPD961	12	24	2160	4320	16
2.74 m (108 in)	2.69 m (105.72 in)	701972-6WPS1081	701972-6WPD1081	13	26	2340	4680	8
2.97 m (117 in)	2.91 m (114.72 in)	701972-6WPS1171	701972-6WPD1171	14	28	2520	5040	8
3.05 m (120 in)	2.99 m (117.72 in)	701972-6WPS1201	701972-6WPD1201	14	28	2520	5040	8

**Dimensions W × H** ..... **Single-sided** ..... 19 mm × 21 mm  
(0.75 in × 0.81 in)  
**Double-sided** .... 19 mm × 32 mm  
(0.75 in × 1.27 in)

**Efficacy** ..... 107 lm/W

**Color temperature (nominal)** .... 6500 K

**Optimum cabinet depth** ..... 200 mm (8") optimum

**Operating temperature** ..... -40° C to +60° C

**Protection class** ..... IP66 & IP68<sup>1</sup>

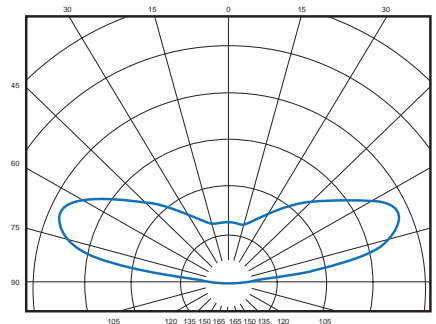
**Binning** ..... MacAdam Step 3

**Life rating** ..... >60,000 hours

**Fastening** ..... Fluorescent lampholders



## Luminous Intensity Distribution



<sup>1</sup> Prism IP68 test parameters are 1.3 m submersion for 30 minutes. Do not mount in submerged application or where module will be directly exposed to prolonged flowing or dripping water.

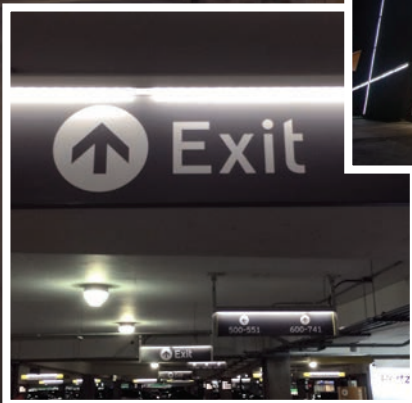
## Accessories



**Bracket**  
402231-10  
Optional – Sold in bags of 10.

# Fluorescent Alternative

Fluorescent alternative LED lighting is a great solution for illuminating cove, awning, and wall wash applications or to highlight non-illuminated signs. It's easy to install and is a great solution for new and retrofit applications.





# HighLINER 2

## Outdoor and indoor linear lighting

- Easy installation for both new construction and retrofit
- Improves walkway and aisle visibility and building aesthetics
- Fits easily into new or existing interior and exterior spaces
- Saves up to 64% energy compared with typical fluorescent fixtures
- Lightweight fixture illuminates soffits evenly

## Specifications

<b>Part number</b> .....	1.2 m (4').....5000 K .....	701912-C1I75
	1.2 m (4').....3500 K .....	701912-35C2I75
	0.3 m (1').....5000 K .....	701912-L1C1I75
	0.3 m (1').....3500 K .....	701912-L135C2I75
<b>Dimensions L x W x H</b> .....	1.2 m (4').....	1160 mm x 60 mm x 28 mm (45.70 in x 2.38 in x 1.12 in)
	0.3 m (1').....	304 mm x 60 mm x 28 mm (11.98 in x 2.38 in x 1.12 in)

## Electrical

<b>Input voltage</b> .....	24 VDC	
<b>Input power</b> .....	System <sup>1</sup>	Luminaire <sup>2</sup>
	1.2 m (4').....	17 W ..... 14.4 W
	0.3 m (1').....	4 W ..... 3.6 W
<b>System Efficacy</b> .....	5000 K.....	105 lm/W
	3500 K.....	93 lm/W

## Lighting

<b>Light output (lumens)<sup>3</sup></b>	5000 K	3500 K
	1.2 m (4').....	1792..... 1582
0.3 m (1').....	448 ..... 395	
<b>Light distribution</b> .....	Linear	
<b>Color temperatures</b> .....	5000 K, 3500 K	
<b>Color rendering (CRI)</b> .....	5000 K.....	80
	3500 K.....	>70

## Performance

<b>Ingress protection</b> .....	IP66 & IP68 <sup>4</sup>
<b>UL location rating</b> .....	Dry, damp, and wet locations
<b>Operating temperature</b> .....	-25° C to 50° C
<b>Life rating</b> .....	100,000 hours (L <sub>70</sub> ) <sup>5</sup>
<b>Dimming</b> .....	Optional Motion Sensing (see Cold Series Dimming Control data sheet)

1 For calculating the maximum number of luminaires that can be connected to the branch circuit, use the SYSTEM INPUT POWER.  
 2 For calculating the maximum number of luminaires that can be connected to a power supply, use the LUMINAIRE INPUT POWER.  
 3 Tolerance range for optical and electrical data: ±15%.  
 4 IP66 & IP68 ratings provide protection for extreme outdoor and wet applications (e.g., car wash) or harsh weather exposure. Do not mount in a submerged application.  
 5 Based on LED component manufacturer data.  
 6 1.2 m (4 ft): 6 units per SloanLED 100 W 24 VDC power supply. 0.3 m (1 ft): 24 units per SloanLED 100 24 VDC power supply.  
 7 May require an L-bracket (not included) for mounting.  
 8 Alternative for 400661. Cat 5 cabling to the sensor not included.  
 9 For sign applications, only certified for use outside of U.S. and Canada.



## Construction

<b>Housing</b> .....	Acrylic, impact modified with UV stabilization
<b>Body color</b> .....	White

## Mounting

<b>Mounting</b> .....	1.2 m (4').....	Mounting clips (3 incl.), Wire nut housing (2 incl.)
	0.3 m (1').....	Mounting clips (2 incl.), Wire nut housing (2 incl.)

## Documentation

<b>Warranty</b> .....	5-year limited
<b>Agency listings</b> .....	UL, NSF/ANSI 2, ETL, CE, DesignLights Consortium® (DLC), RoHS
<b>Files available</b> .....	LM-79, LM-80, IES



## Power Supplies<sup>6</sup>

Item description	Part number
100 W	701895-24C

## Dimming

Item description	Part number
Dimming Controller	701890-PWR
Occupancy Sensor, Standard <sup>7</sup>	400661
Occupancy Sensor, Wide Angle <sup>8</sup>	400964

## Accessories



**Mounting Clip**  
400686  
Three (3) included with 1.2 m (4 ft) assembly  
Two (2) included with 0.3 m (1 ft) assembly



**Wire Nut Housing**  
400860  
Two (2) included with 1.2 m (4 ft) assembly  
Two (2) included with 0.3 m (1 ft) assembly

# SlimLINER

Low-profile outdoor and indoor

- Fast, easy installation with versatile mounting options
- Can be cut in the field to custom lengths
- Slim, lightweight, low-profile fixture illuminates awnings evenly
- 305 mm (12") bend radius
- Constant Current Technology (CCT)

## Specifications

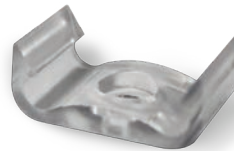
<b>Part number</b> .....	5000 K..... 701956-5WL461
	3500 K..... 701956-3WL461
<b>Dimensions L × W × H</b> .....	1168 mm × 23 mm × 9 mm (46 in × 0.89 in × 0.35 in)
<b>Lumens per fixture</b> .....	5000 K..... 970
	3500 K..... 825
<b>In-field bends</b> .....	Radial bend..... 305 mm (12 in)
<b>Color temperatures (nominal)</b> ..	5000 K, 3500 K
<b>Color rendering index (CRI)</b> .....	5000 K..... 70 (nominal)
	3500 K..... 82 (nominal)
<b>Estimated product lifetime</b> .....	50,000 hours (L <sub>70</sub> )
<b>Operating temperature</b> .....	-40° C to 70° C
<b>Protection class</b> .....	IP66 & IP68 <sup>1</sup>
<b>Special feature</b> .....	Cuttable every 150 mm (6 in) for two usable sides
<b>Power</b> .....	7.4 W per meter (2.25 W per foot), 9.0 W per fixture
<b>Efficacy</b> .....	5000 K..... 108 lm/W
	3500 K..... 92 lm/W
<b>Fastening</b> .....	Peel-n-stick or mounting clips (401203), 4 included with each unit
<b>Power capacity</b> .....	6 units per SloanLED 60 W 12 VDC power supply



<sup>1</sup> IP66 & IP68 ratings provide protection for extreme outdoor and wet applications or harsh weather exposure. Do not mount in a submerged application.



## Accessories



### Mounting Clip

401203  
Four (4) included with each unit.  
Sold in bags of 25.

# Outdoor Area

SloanLED outdoor area LED lighting systems capture customer attention with consistent and bright illumination, in addition to providing sizable energy savings over non-LED fixtures.





# Revolutionary design for powerful solutions.

PDL3 MODUS sets new standards with its slim, lightweight, 25 mm (1") design, and optimized radiation pattern; and unlike other surface mounting fixtures, L<sub>70</sub> life rating is based on the highest brightness setting, and at the maximum ambient temperature, ensuring superior performance and reliability. This IP68-rated, surface mounting fixture is virtually maintenance free and sealed to keep out bugs, dust, and water.

- Designed for fast, one person installation, without the need for site surveys
- Power Module allows each driver solution to have three lumen settings without hardware replacement
- Faster ROI, industry leading warranty, and virtually no maintenance
- **Energy savings up to 250% over typical HID fixtures**



Standard



High Output

## 1. Select a fixture

<b>PDL3 MODUS</b>	Clear.....	701948-5WCWT3-M
	Textured .....	701948-5WTWT3-M
<b>PDL3 MODUS High Output</b>	Clear, White .....	701948-5WCWT3-MH
	Textured, White.....	701948-5WTWT3-MH
	Clear, Bronze.....	701948-5WCBZ3-MH
	Textured, Bronze .....	701948-5WTBZ3-MH

## 2. Select a power supply solution

### Power Supply Solution

Description	For use with	Code	Wattage	Part number
<b>MOD1</b> Global Petroleum Canopy	PDL3 MODUS Standard	MOD 1.1	75 W	601071
		MOD 1.2	150 W	601072
	PDL3 MODUS HO	MOD 1.3	200 W	601073
<b>MOD2</b> North American Petroleum Canopy	PDL3 MODUS Standard	MOD 2.1	75 W	601074
		MOD 2.2	150 W	601075
	PDL3 MODUS HO	MOD 2.3	200 W	601076
<b>MOD3</b> North American Walk-In Cooler	PDL3 MODUS Standard	MOD 3.1	75 W	601077
		MOD 3.2	150 W	601078
	PDL3 MODUS HO	MOD 3.3	200 W	601079
<b>MOD4</b> North American Parking Garage/ Surface Mount	PDL3 MODUS Standard	MOD 4.1	75 W	601080
		MOD 4.2	150 W	601081
	PDL3 MODUS HO	MOD 4.3	200 W	601082
<b>MOD4</b> Global Parking Garage/Surface Mount	PDL3 MODUS Standard	MOD 4.4	75 W	601088
		MOD 4.5	150 W	601089
	PDL3 MODUS HO	MOD 4.6	200 W	601090
<b>MOD5</b> North American Shoebox Retrofit	PDL3 MODUS Standard	MOD 5.1	75 W	601083
		MOD 5.2	150 W	601084
	PDL3 MODUS HO	MOD 5.3	200 W	601085

## 3. Select accessories

### Accessories

Item description	Part number
Mounting Plate, 700 mm	401568-700
Mounting Plate, Bronze, 700 mm	401568-700MH
Shoebox Mounting Plate	401397
Blank Plate (De-lamping)	401219
Blank Plate, Bronze (De-lamping)	401219-BZ
Install Template <sup>2</sup>	401398
EU Waterproof Junction Box	701952-EU

### Dimming Accessories<sup>1</sup>

Item description	Part number
Dimming Controller for 75 W Power Supply	601092
Dimming Controller for 150 W Power Supply	601093
Dimming Controller for 200 W Power Supply	601094
Occupancy Sensor	701953

<sup>1</sup> Power supply solution not included.

<sup>2</sup> Dimming controller replaces the Power Module. Dimming controller box fits inside housings of MOD 2, MOD 3, and MOD 4. To install dimming controller on MOD 1, a plastic enclosure must be used (P/N 701952-EU).

# PDL3 MODUS

## Specifications

<b>Electrical</b>	<b>75 W Mod</b>	<b>150 W Mod</b>
<b>System power settings</b> .....	36 W, 51 W, 66 W	88 W, 105 W, 125 W
<b>System efficacy</b> .....	140 lm/W (36 W) 137 lm/W (51 W) 136 lm/W (66 W)	133 lm/W (88 W) 125 lm/W (105 W) 122 lm/W (125 W)
<b>Input voltage</b> .....	100-277 VAC, 50-60 Hz	
<b>Lighting<sup>1</sup></b>	<b>75 W Mod</b>	<b>150 W Mod</b>
<b>Light output (lm/W)</b>	5,000 Lumens (36 W) 7,000 Lumens (51 W) 9,000 Lumens (66 W)	11,700 Lumens (88 W) 13,100 Lumens (105 W) 15,200 Lumens (125 W)
<b>Light distribution</b> .....	Symmetric (Type 5)	
<b>Color</b> .....	5000 K CCT	
<b>Color rendering</b> .....	70 CRI	
<b>Performance</b>	<b>75 W Mod</b>	<b>150 W Mod</b>
<b>Operating temperature</b> .....	-40° C to 60° C (36 W) -40° C to 55° C (51 W) -40° C to 50° C (66 W)	-40° C to 60° C (88 W) -40° C to 55° C (105 W) -40° C to 50° C (125 W)
<b>Ingress protection</b> .....	IP68 (highest dust and water protection)	
<b>UL location rating</b> .....	Suitable for wet locations	
<b>Life rating</b> .....	100,000 hours (L <sub>70</sub> ) <sup>2</sup> at maximum operating conditions	
<b>Dimming (optional)</b> .....	1-10 VDC control on power supply	
<b>Construction</b>		
<b>Frame</b> .....	Die cast aluminum	
<b>Heat plate</b> .....	Aluminum	
<b>Finish</b> .....	White, powder coated for extreme conditions	
<b>Lens</b> .....	Tempered glass	
<b>Dimensions W × H</b> .....	406 mm (16") square × 25 mm (1")	
<b>Mounting</b>		
<b>Light</b> .....	4 self-drilling sheet metal screws	
<b>Power supply</b> .....	Based on your application, choose the correct MOD version for your power supply needs	
<b>Documentation</b>		
<b>Warranty</b> .....	10-year limited	
<b>Agency listings</b> .....	cULus, CE, ENEC, RoHS, Title 24 Compliant	
<b>Files available</b> .....	LM-79, LM-80, IES	

1 Lighting data pending third party verification.  
2 Based on LED component manufacturer data.



# PDL3 MODUS High Output

## Specifications

<b>Electrical</b>	<b>200 W Mod</b>
<b>System power settings</b> .....	123 W, 141 W, 164 W
<b>System efficacy</b> .....	147 lm/W (123 W) 145 lm/W (141 W) 141 lm/W (164 W)
<b>Input voltage</b> .....	100-277 VAC, 50-60 Hz
<b>Lighting<sup>1</sup></b>	<b>200 W Mod</b>
<b>Light output (lm/W)</b>	18,100 Lumens (123 W) 20,400 Lumens (141 W) 23,100 Lumens (164 W)
<b>Light distribution</b> .....	Symmetric (Type 5)
<b>Color</b> .....	5000 K CCT
<b>Color rendering</b> .....	70 CRI
<b>Performance</b>	<b>200 W Mod</b>
<b>Operating temperature</b> .....	-40° C to 60° C (123 W) -40° C to 50° C (141 W) -40° C to 40° C (164 W)
<b>Ingress protection</b> .....	IP68 (highest dust and water protection)
<b>UL location rating</b> .....	Suitable for wet locations
<b>Life rating</b> .....	60,000 hours (L <sub>70</sub> ) <sup>2</sup> at maximum operating conditions
<b>Dimming (optional)</b> .....	1-10 VDC control on power supply
<b>Construction</b>	
<b>Frame</b> .....	Die cast aluminum
<b>Heat plate</b> .....	Aluminum
<b>Finish</b> .....	White or Bronze, powder coated for extreme conditions
<b>Lens</b> .....	Tempered glass
<b>Dimensions W × H</b> .....	406 mm (16") square × 25 mm (1")
<b>Mounting</b>	
<b>Light</b> .....	4 self-drilling sheet metal screws
<b>Power supply</b> .....	Based on your application, choose the correct MOD version for your power supply needs
<b>Documentation</b>	
<b>Warranty</b> .....	10-year limited
<b>Agency listings</b> .....	cULus, CE, ENEC, RoHS, Title 24 Compliant
<b>Files available</b> .....	LM-79, LM-80, IES

# PML3 Paladin

## LED pole mount family for area lighting

- Increases visibility at entrances, in the parking area, and along the property perimeter
- Complete family of options, providing the ideal solution for your area lighting needs, regardless of project scale
- 5-year limited warranty
- *Saves up to 80% energy compared with typical HID fixtures*



## Specifications

### Electrical

**Input voltage** ..... 100-240 VAC, 50-60 Hz

Size	System power	System efficacy	Inrush current
200 W	212.3 W	99.3 lm/W	30 A
160 W	153.5 W	107.3 lm/W	65 A
120 W	116.9 W	105.6 lm/W	60 A
90 W	89.5 W	103.7 lm/W	60 A
60 W	55 W	110.3 lm/W	55 A
40 W	37 W	120.0 lm/W	50 A
30 W	32 W	122.0 lm/W	50 A

### Lighting

Size	Light output (nominal)	Pole height & Lux correlation						
		3.6 m (12')	4.5 m (15')	6.0 m (20')	7.6 m (25')	9.0 m (30')	10.5 m (35')	12 m (40')
200 W	21,074 Lumens	414	271	156	105	70	66	61
160 W	16,464 Lumens	330	212	123	82	55	51	46
120 W	12,347 Lumens	253	165	97	64	43	47	41
90 W	9,283 Lumens	195	128	74	49	33	41	32
60 W	6,064 Lumens	93	70	49	34	20	23	15
40 W	4,443 Lumens	68	51	36	25	15	20	14
30 W	3,901 Lumens	59	44	31	22	13	13	9

**Light distribution** ..... Type III and Type V

**Color temperature (CCT)** ..... 5000 K

**Color rendering (CRI)** ..... >75

### Performance

**Ingress protection** ..... IP66

**IK Code** ..... IK09

**Operating temperature** ..... -35° C to 50° C

**Life rating** ..... 70,000 hours (L<sub>70</sub>)<sup>1</sup>

<sup>1</sup> Based on LED component manufacturer data.

### Construction

**Body** ..... Die cast aluminum

**Body colors** ..... Silver and White

**Dimensions L x W x H** ..... **Large** ..... 878 mm x 402 mm x 182 mm (34.5" x 15.8" x 7.15")  
**Medium** ..... 758 mm x 332 mm x 167 mm (29.8" x 13.1" x 6.6")  
**Small** ..... 628 mm x 266 mm x 160 mm (24.7" x 10.5" x 6.3")

**Weight** ..... **Large** ..... 15.6 kg

**Medium** ..... 10.5 kg

**Small** ..... 10.1 kg

### Mounting

**Adjustable slipfitter** ..... Die cast aluminum fitter adjusts incrementally 15° up from horizontal and 15° down from horizontal

**Pole top** ..... **Large** ..... Fitter mates to nominal Ø 76 mm (3.0") round pole

**Medium, Small** ..... Fitter mates to nominal Ø 60 mm (2.4") round pole

### Documentation

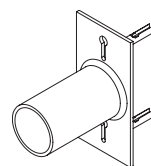
**Warranty** ..... 5-year limited

**Agency listings** ..... cULus, CE, ENEC

**Files available** ..... LM-79, LM-80, IES

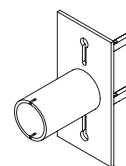


### Accessories



#### 76 mm Tenon Kit

Square poles and surface mount.  
 601100-SL (Silver)  
 601100-WH (White)



#### 60 mm Tenon Kit

Square poles  
 601102-CC-SL (Silver)  
 601102-CC-WH (White)  
 Round poles  
 601017-CC-SL (Silver)  
 601017-CC-WH (White)



#### 20 kVA Surge Protector

410186



#### Universal Photocell

401762



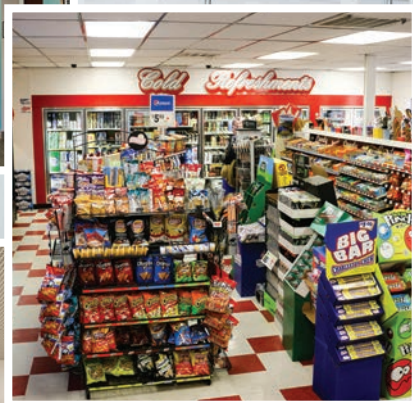
#### Photocell Socket

601053



# Indoor Commercial

SloanLED indoor commercial LED lighting systems use cutting edge LED technology to combine class-leading efficiency, performance, and value to create aesthetically pleasing retail interiors.



## Edge lit LED flat panel luminaire

- Maximum efficacy and minimum glare
- Suspension and surface mounting for convenient installation
- Superior heat dissipation
- Impact resistant PMMA light guide for lasting quality
- Saves up to 51% energy compared with typical fluorescent fixtures\*

## Specifications

### Electrical

<b>Input voltage</b> .....	220-230 VAC, 50-60 Hz
<b>System power</b> .....	300 × 1200 mm .....39 W
	600 × 1200 mm .....56 W
	600 × 600 mm .....38 W
	625 × 625 mm .....39 W
<b>System efficacy</b> .....	300 × 1200 mm .....110 lm/W
	600 × 1200 mm
	600 × 600 mm .....120 lm/W
	625 × 625 mm
<b>Power factor</b> .....	0.89
<b>THD</b> .....	<20%

### Lighting

<b>Light output</b> .....	300 × 1200 mm .....4300 Lumens
	600 × 1200 mm .....6200 Lumens
	600 × 600 mm .....4600 Lumens
	625 × 625 mm .....4700 Lumens
<b>Beam angle</b> .....	120°
<b>Color temperature (CCT)</b> .....	4000 K
<b>Color rendering (CRI)</b> .....	80

## Accessories



### Surface Mount Box

AXSMT-6060-WH (600 × 600 mm)  
AXSMT-6262-WH (625 × 625 mm)  
AXSMT-3012-WH (300 × 1200 mm)  
AXSMT-6012-WH (600 × 1200 mm)

### Suspension Kit

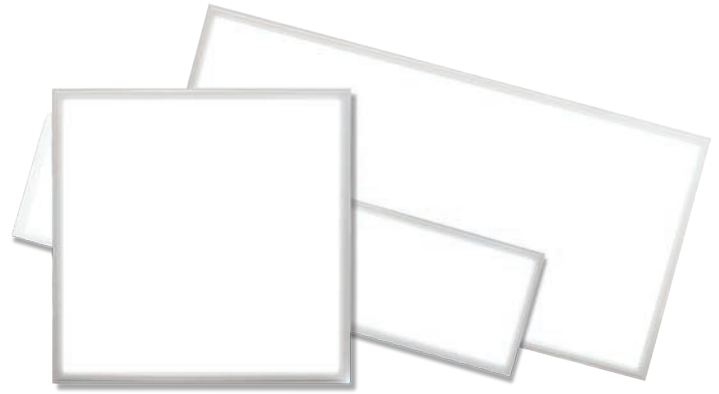
AXSUS-4WA  
(300 × 1200 mm)  
AXSUS-4WB  
(600 × 600 mm,  
625 × 625 mm and  
600 × 1200 mm)

### 1.5 m cord and Wieland plug

AXWCP-15-CE

### 8 W Battery Backup

AXEMB1-8W-CE



### Performance

<b>Application</b> .....	Rated for non-insulated ceiling applications
<b>Ingress protection</b> .....	IP40 (damp location rated)
<b>Operating temperature</b> .....	-20° C to +40° C
<b>Life rating</b> .....	60,000 hours (L <sub>70</sub> ) <sup>1</sup>

### Construction

<b>Frame</b> .....	Aluminum
<b>Light guide lens</b> .....	Impact resistant, shatter proof, PMMA acrylic
<b>Finish</b> .....	Satin white frame
<b>Diffuser</b> .....	Translucent white

### Documentation

<b>Warranty</b> .....	5-year limited
<b>Agency listings</b> .....	CE

<sup>1</sup> Based on LED component manufacturer data.



## Dimensions

Panel thickness: 9 mm (.35")



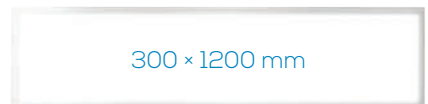
600 × 600 mm,  
625 × 625 mm

**600 mm × 600 mm**  
595 mm × 595 mm × 44 mm  
(23.4" × 23.4" × 1.75")  
**625 mm × 625 mm**  
625 mm × 625 mm × 44 mm  
(24.6" × 24.6" × 1.75")



600 × 1200 mm

595 mm × 1195 mm × 44 mm  
(23.4" × 47.0" × 1.75")



300 × 1200 mm

295 mm × 1195 mm × 44 mm  
(11.6" × 47.0" × 1.75")



# Refrigerated Display

Cold Series™ refrigerated display LED lighting systems use cutting edge LED technology to combine efficiency, performance, and value for state of the art merchandising.





# Cold Deck FIT

LED lighting system for multi-deck merchandisers



- Illuminates product facings with crisp, uniform light dispersion
- Optimize visual appeal and color accuracy of meat products with new "Prime" meat-tuned LED chip<sup>4</sup>
- Waterproof (IP68) for produce "wet zones" or spray down maintenance of display cases
- **Up to 77% energy savings compared with typical fluorescent fixtures**

## Specifications

### Electrical

<b>Input voltage</b> .....	100-240 VAC, 50-60 Hz					
<b>Output voltage</b> .....	24 VDC, Class 2 low voltage					
<b>Fixture power</b> .....	<b>0.3 m (1')</b>		<b>0.9 m (3')</b>		<b>1.2 m (4')</b>	
	<b>Canopy</b>	<b>Shelf</b>	<b>Canopy</b>	<b>Shelf</b>	<b>Canopy</b>	<b>Shelf</b>
	2.3 W	1.1 W	9.0 W	3.4 W	11.3 W	4.5 W

### Lighting

#### Illuminance

Color temperature	0.3 m (1')		0.9 m (3')		1.2 m (4')	
	Canopy	Shelf	Canopy	Shelf	Canopy	Shelf
2700 K	241	137	963	410	1204	547
3500 K	266	153	1063	797	1329	611
4000 K	276	158	1104	472	1380	630
Prime	N/A		N/A		636	313

**Color temperatures (CCT)** ..... 2700 K, 3500 K, 4000 K, Prime (meat-tuned)<sup>1</sup>

**Color rendering (CRI)** ..... >80

### Performance

**Ingress protection** ..... IP68 (highest dust and water protection)

**Operating temperature** ..... -25° C to 50° C

**Life rating** ..... 100,000 hours (L<sub>70</sub>)<sup>2</sup>

**Dimming** ..... Optional Motion Sensing (see Cold Series Dimming Control data sheet)

<sup>1</sup> Prime available in 1.2 m (4') length only.  
<sup>2</sup> Based on LED component manufacturer data.



### Power Supplies<sup>5</sup>

Description	Part number
100 W	701936
100 W	701895-24W
100 W	701895-24C
40 W	410175

### Dimming

Description	Part number
Dimming Controller	701890-PWR
Occupancy Sensor, Standard <sup>7</sup>	400661
Occupancy Sensor, Wide <sup>8</sup>	400964

### Accessories<sup>6</sup>

Item description	Part number
Stand-off Clip	401091
5 Clip Spanner Wrenches	401368-5
Small Terminal Block	401350
Large Terminal Block	401351

### Construction

**Housing** ..... Acrylic, impact modified with UV stabilization

**Body color** ..... Smooth white

<b>Dimensions</b> .....	<b>0.3 m (1') Canopy</b> .....	278 mm × 44 mm × 29 mm (10.94" × 1.75" × 1.15")
	<b>0.9 m (3') Canopy</b> .....	865 mm × 44 mm × 29 mm (34.05" × 1.75" × 1.15")
	<b>1.2 m (4') Canopy</b> .....	1170 mm × 44 mm × 29 mm (46.05" × 1.75" × 1.15")
	<b>0.3 m (1') Shelf</b> .....	278 mm × 44 mm × 20 mm (10.94" × 1.75" × 0.80")
	<b>0.9 m (3') Shelf</b> .....	865 mm × 44 mm × 20 mm (34.05" × 1.75" × 0.80")
	<b>1.2 m (4') Shelf</b> .....	1170 mm × 44 mm × 20 mm (46.05" × 1.75" × 0.80")

**Weight** .....

**0.3 m (1') Canopy and Shelf:** 0.1 kg

**0.9 m and 1.2 m (3' and 4') Canopy:** 0.4 kg

**Shelf:** 0.3 kg

### Mounting

**Canopy** ..... Stand-off Clips (6 included)

**Shelf** ..... Magnetic or mechanical (screws not included)

### Documentation

**Warranty** ..... 5-year limited

**Agency listings** ..... CE, UL Listed, UL (NSF/ANSI 2)

**Files available** ..... LM-79, LM-80, IES

<sup>4</sup> Prime available in 1.2 m (4') length only.  
<sup>5</sup> See install guide for power supply loading information.  
<sup>6</sup> Six (6) clips included with each canopy light to space by 13 mm (1/2") or angle by 10°. Additional clips may be used to increase spacing and/or angle (see install guide). Additional clips may also be used to angle shelf lights if desired. Screws not included for fastening to non-magnetic shelves.  
<sup>7</sup> May require an L-bracket (not included) for mounting.  
<sup>8</sup> Alternative for 400661. Cat 5 cabling to the sensor not included.

# Cold Door 3

## LED lighting system for cooler doors

- Delivers bright, uniform light, vibrant color, and reduced glare to product facings at depths as shallow as 50 mm (2")
- High efficacy at 109 lm/W allows powering of up to 5-door frames on a single power supply
- Optional wing accessories conceal light source from consumers
- *Up to 85% energy savings compared with typical fluorescent fixtures*



## Specifications

### Electrical

**Input voltage** ..... 100-240 VAC (to power supply)

**Fixture voltage** ..... 24 VDC

### Efficacy

Size	Total lumens <sup>1</sup>	System power	Calculated system efficacy
1.2 m (4') Center	1280	12.4	103
1.2 m (4') End	880	8.1	109
1.5 m (5') Center	1547	15.5	100
1.5 m (5') End	1063	10.5	102
1.8 m (6') Center	1813	18.1	100
1.8 m (6') End	1247	11.6	108
2.1 m (7') Center	1947	19.3	101
2.1 m (7') End	1338	12.6	106

### Lighting

**Lumens/meter (nominal)** ..... Center ..... 1050  
 End ..... 722

**Color temperatures (CCT)** ..... 4000 K, 5000 K

**Color rendering** ..... >80 CRI

### Performance

**Operating temperature** ..... -25° C to 50° C

**Life rating** ..... 177,000 hours (L<sub>90</sub>)<sup>2</sup>  
 at maximum operating conditions

**Dimming** ..... Optional Motion Sensing (see Cold Series Dimming Control data sheet)



<sup>1</sup> Based on published lm/meter.  
<sup>2</sup> Calculated from LM80 data.  
<sup>3</sup> Also functions as a power controller, replacing P/N 701929 when dimming is specified. Use with 701895-24W power supply.  
<sup>4</sup> Bulk package includes 24 clips.  
<sup>5</sup> Bulk package includes 12 pieces.

### Construction

**Housing** ..... Aluminum

**Lens** ..... PMMA

**Body color** ..... Black

**Dimensions L x W x H** .....

1.2 m Center	1223 mm x 35 mm x 19.6 mm (48.2" x 1.4" x 0.8")
1.2 m End	1223 mm x 35 mm x 22 mm (48.2" x 1.4" x 0.9")
1.5 m Center	1477 mm x 35 mm x 19.6 mm (58.2" x 1.4" x 0.8")
1.5 m End	1477 mm x 35 mm x 22 mm (58.2" x 1.4" x 0.9")
1.8 m Center	1731 mm x 35 mm x 19.6 mm (68.2" x 1.4" x 0.8")
1.8 m End	1731 mm x 35 mm x 22 mm (68.2" x 1.4" x 0.9")
2.1 m Center	1858 mm x 35 mm x 19.6 mm (73.2" x 1.4" x 0.8")
2.1 m End	1858 mm x 35 mm x 22 mm (73.2" x 1.4" x 0.9")

### Mounting

**Center** ..... Mounting clips (2 included)

**End** ..... Mounting clips (2 included)

### Documentation

**Warranty** ..... 5-year limited

**Agency listings** ..... UL (NSF/ANSI 2), CE, RoHS

**Files available** ..... LM-79, LM-80, IES

### Power Supplies

Description	Part number
100 W, Flying leads	701936
100 W, Connector for Dimming Controller	701895-24W
40 W	410175

### Dimming

Description	Part number
Dimming Controller <sup>3</sup>	701890-PWR
Occupancy Sensor, Standard	400661
Occupancy Sensor, Wide	400964

### Accessories

Item description	Part number	
	Two pack	Bulk
Snap-in Clip <sup>4</sup>	401943-2	401943-24
1.2 m Invisibility Light Guard <sup>5</sup>	402074-46-2	402074-46-12
1.5 m Invisibility Light Guard <sup>5</sup>	402074-56-2	402074-56-12
1.8 m Invisibility Light Guard <sup>5</sup>	402074-66-2	402074-66-12
2.1 m Invisibility Light Guard <sup>5</sup>	402074-76-2	402074-76-12
1.2 m End Reflector <sup>5</sup>	402074-46-EC-2	402074-46-EC-12
1.5 m End Reflector <sup>5</sup>	402074-56-EC-2	402074-56-EC-12
1.8 m End Reflector <sup>5</sup>	402074-66-EC-2	402074-66-EC-12
2.1 m End Reflector <sup>5</sup>	402074-76-EC-2	402074-76-EC-12

Trade names, marks and logos shown are the property of their respective owners. Specifications may change without notice.

# No matter where you are. **We've got you covered.**

From Alaska to Australia, with 150+ employees, and the best global coverage in the industry, we've got you covered.

SloanLED Europe, B.V.,  
Delfgauw, The Netherlands  
EMEA ~ Asia Sales & Distribution Center



SloanLED, Inc.  
Ventura, CA  
Company headquarters  
Administration  
Sales & Marketing  
Engineering

SloanLED Asia, Inc.  
Dong Guan Province, China  
LED / Circuit Board Assembly  
SloanLED managed contract  
manufacturing



**SloanLED Headquarters**  
888.747.4LED • SloanLED.com

**SloanLED Europe**  
Tel +31 88 12 44 900 • Europe@SloanLED.com

© 2018 SloanLED Rev J 2018-06-20

